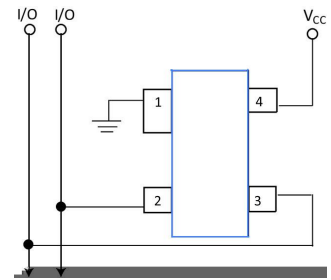
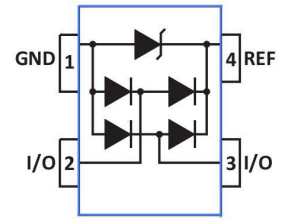




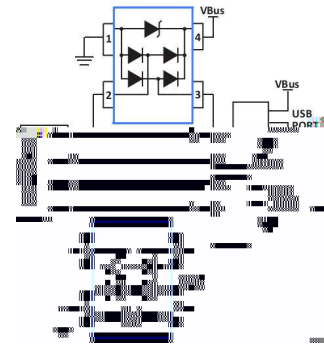
## Low Capacitance ESD Protection -ESDSR05

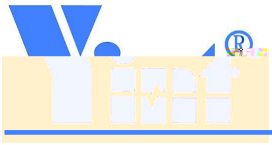


### Schematic and PIN Configuration

### Application Example Protection

#### USB Port Protection





## Absolute Maximum Ratings


## Electrical Characteristics (T =25 °C)

Parameter	Symbol	Conditions	Min.	Typ.	Max.	Units
Reverse Stand-off Voltage	$V_{RWM}$				5	V
Reverse Breakdown Voltage	$V_{BR}$	$I_t = 1mA$	6			V
Reverse Leakage Current	$I_R$	$V_{RWM} = 5.0V, T=25$			5	A
Clamping Voltage	$V_C$	$I_{PP} = 1A, t_P = 8/20\mu s$			9.8	V
Clamping Voltage	$V_C$	$I_{PP} = 10A, t_P = 8/20\mu s$			12	V
Junction Capacitance	$C_J$	$V_R = 0V, f = 1MHz$		0.7	2.5	pF

